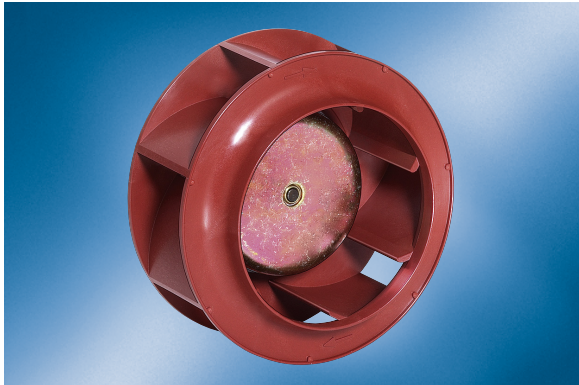


EC centrifugal fan

Backward curved

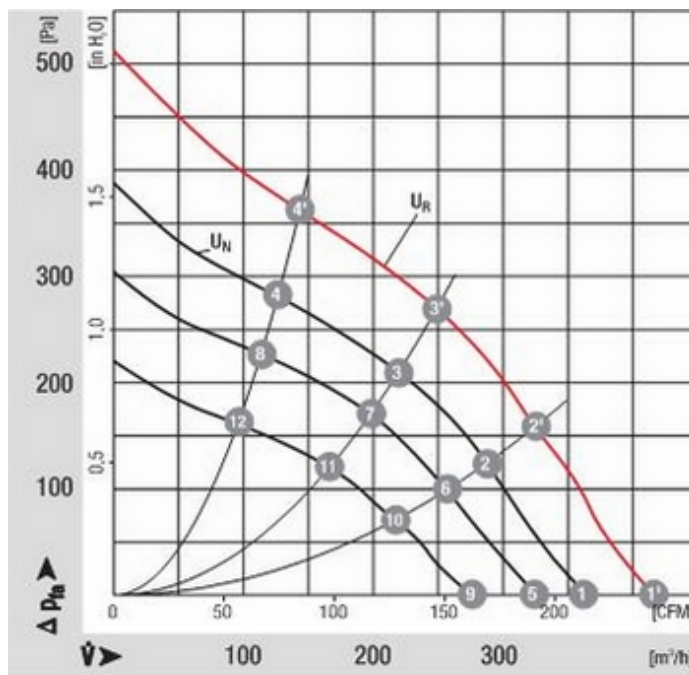


- **Technical equipment:** 0-10 VDC / PWM control input, tach output
- **Impeller material:** All-plastic impeller of PA 6.6 GV, injected round sheet-metal plate
- **Bearings:** Maintenance-free ball bearings

Nominal data		Voltage	Voltage range VDC	Air flow	Speed	Power consumption	Current draw	Sound pressure level	Operative range	Ambient temperature	Weight
Type	Motor	VDC	VDC	m ³ /h	1/min	W	A	dB(A)	Pa	°C	kg
R1G133AA1702	M1G055BD	24	16 - 28	360	3900	28	1.30	63	0..510	-25..60	0.7

Subject to modification

Characteristic: Pressure over air flow

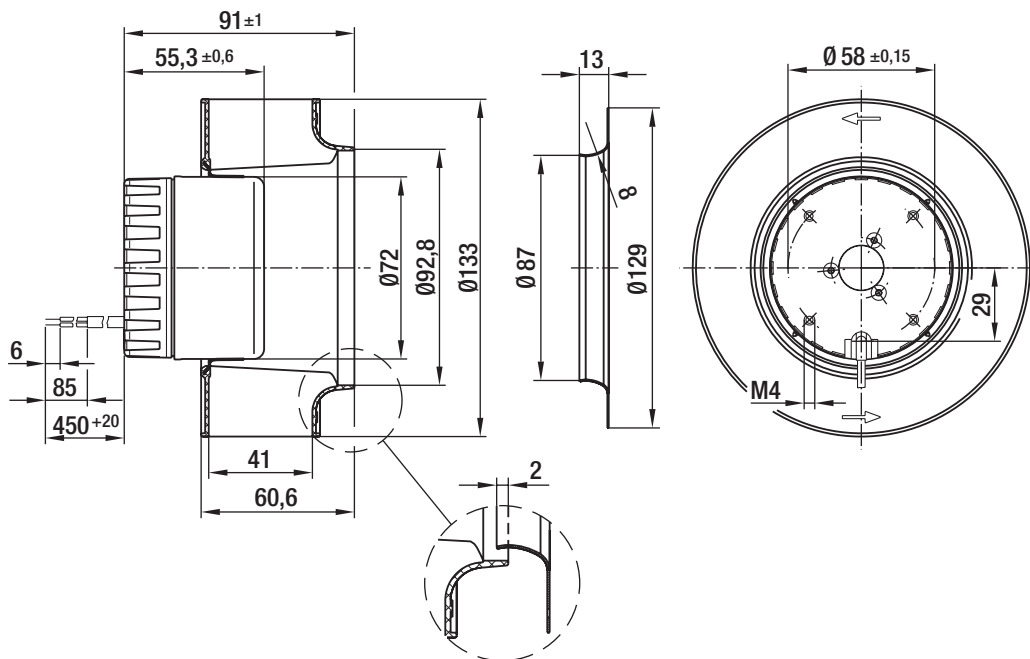


	n [1/min]	P ₁ [W]	I [A]	LpA [dBA]	ntL [%]
1	4450	39	--	74	--
2	4250	44	--	60	45
3	4270	44	--	59	56
4	4380	41	--	61	44
1	3900	28	--	63	--
2	3770	31	--	58	45
3	3770	31	--	56	56
4	3850	29	--	58	44
5	3500	20	--	59	--
6	3380	23	--	55	45
7	3400	23	--	53	56
8	3450	21	--	55	44
9	2970	13	--	55	--
10	2860	15	--	51	45
11	2880	15	--	49	56
12	2930	14	--	51	44

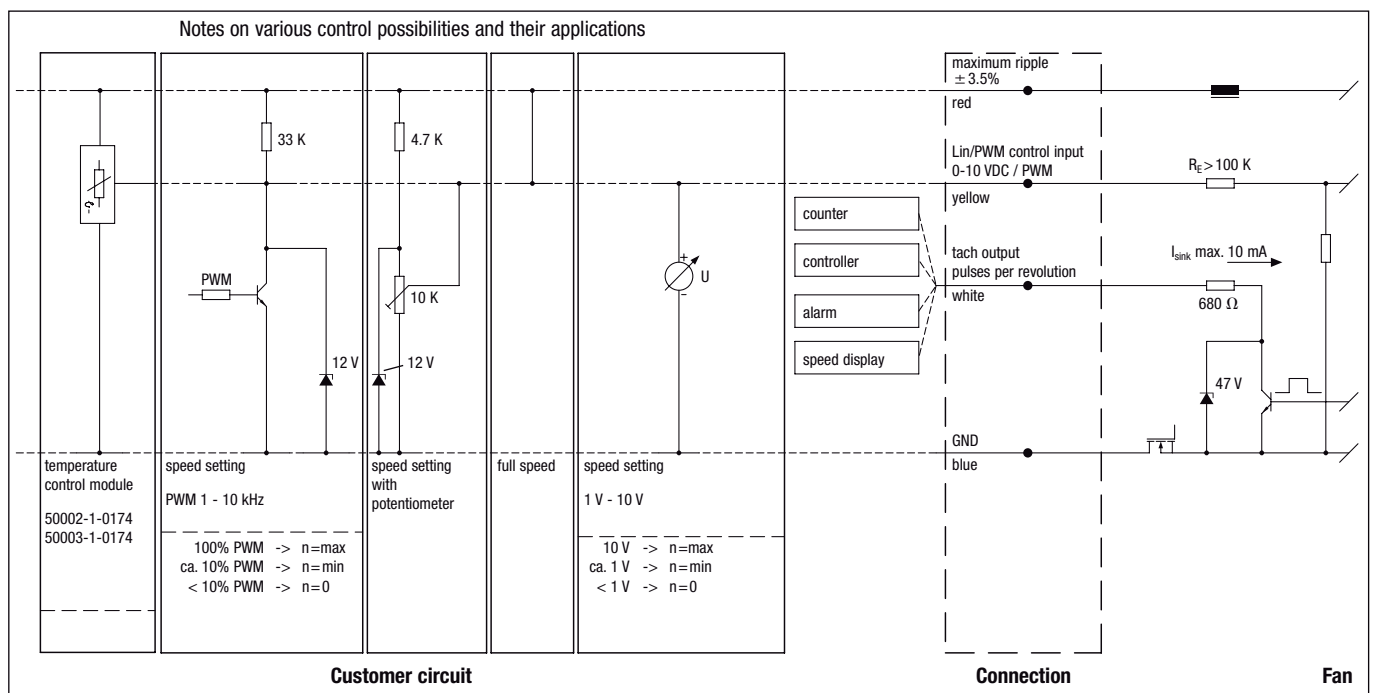
EC centrifugal fan

Backward curved

Specific drawing



Connection illustration



Line 1



Line	Signal	Colour	Assignment / function	Line	Signal	Colour	Assignment / function
1	+	red	maximum ripple ± 3.5 %	1	Tacho	white	Tach output: pulses per revolution
	GND	blue	GND		0-10 V / PWM	yellow	Control input

EC centrifugal fan

Backward curved

Technical description

- **Technical equipment:** 0-10 VDC / PWM control input, tach output
- **Bearings:** Maintenance-free ball bearings
- **Number of impeller blades:** 7
- **Cable layout:** Variable
- **Screw depth:** Max. 6 mm
- **Insulation class:** "B"
- **System of protection:** IP 20
- **Impeller material:** All-plastic impeller of PA 6.6 GV, injected round sheet-metal plate
- **Direction of rotation:** Right, looking at rotor
- **Electrical connection:** Cable ends with wire-end clamps
- **Installation orientation / condensate discharge holes:** Any installation orientation without condensate discharge holes
- **Operating mode:** S1
- **Protection class:** I
- **Approvals:** UL 1004, CSA C22.2 No. 100 tested at UL

Contact

ebm-papst Mulfingen GmbH & Co. KG

Bachmühle 2

D-74673 Mulfingen

Phone +49 (0) 79 38 / 81-0

Fax +49 (0) 79 38 / 81-110

info1@de.ebmpapst.com

www.ebmpapst.com